

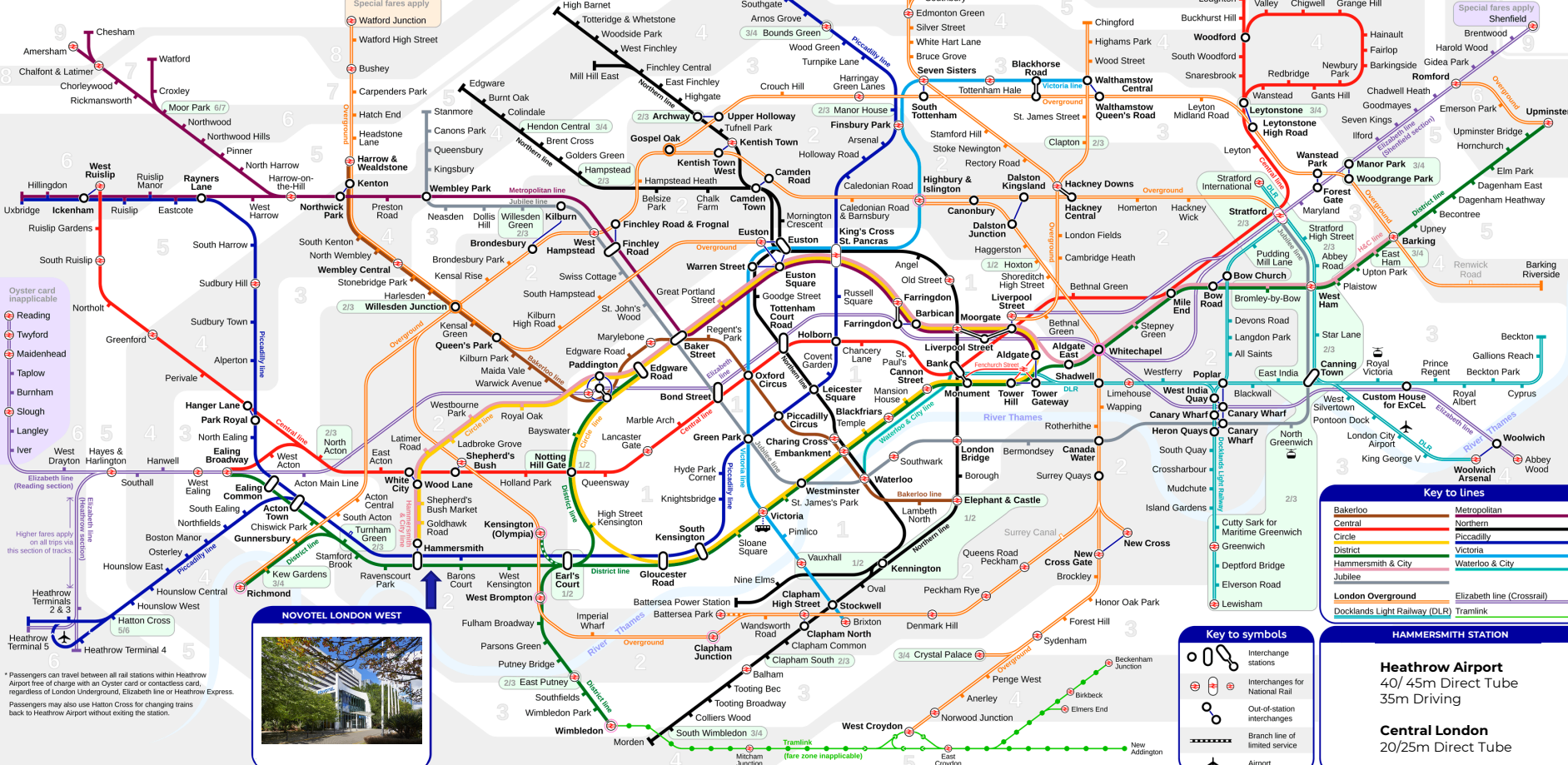
# NO VO TEL

LONDON WEST

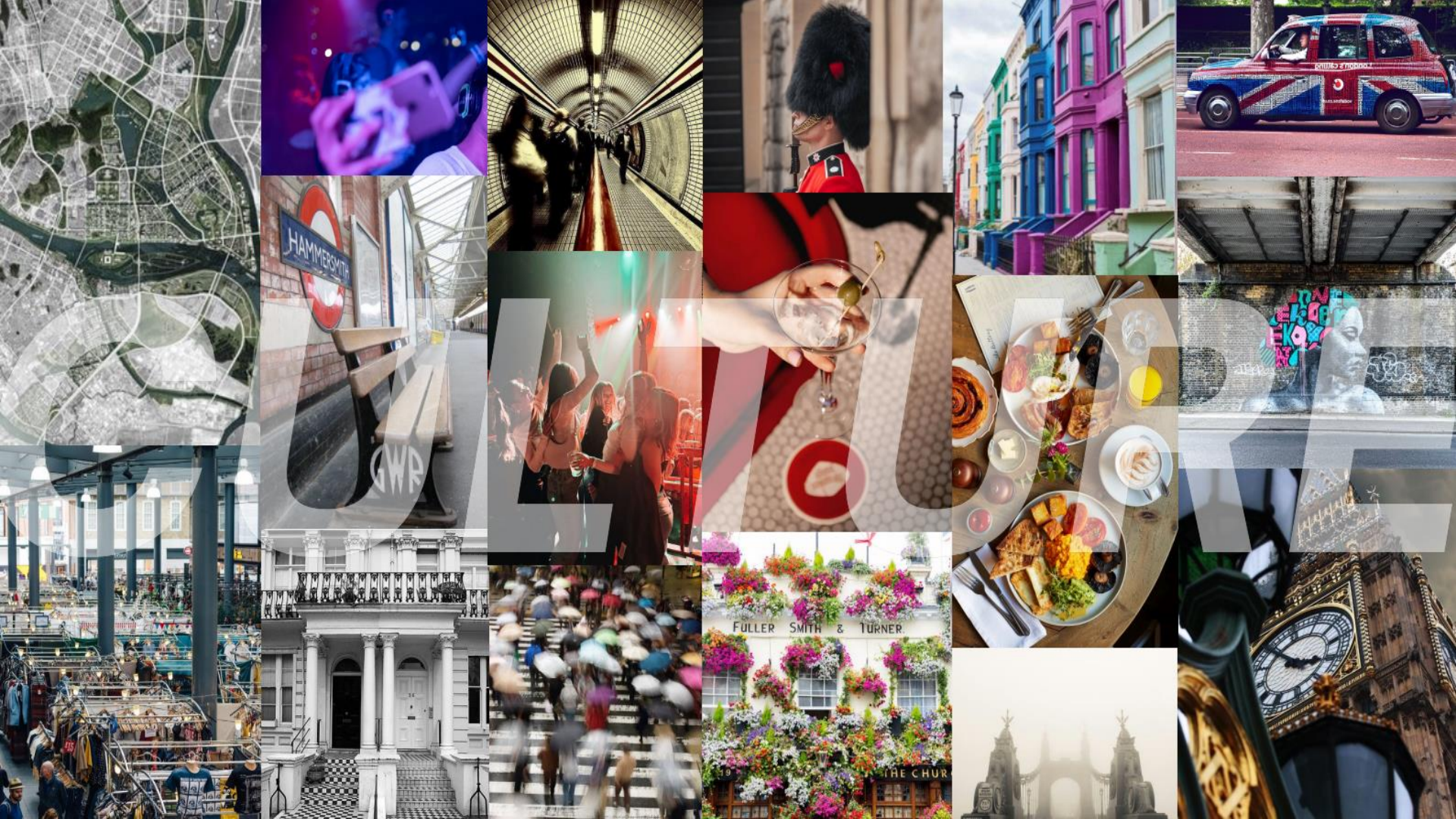




2025







## Location

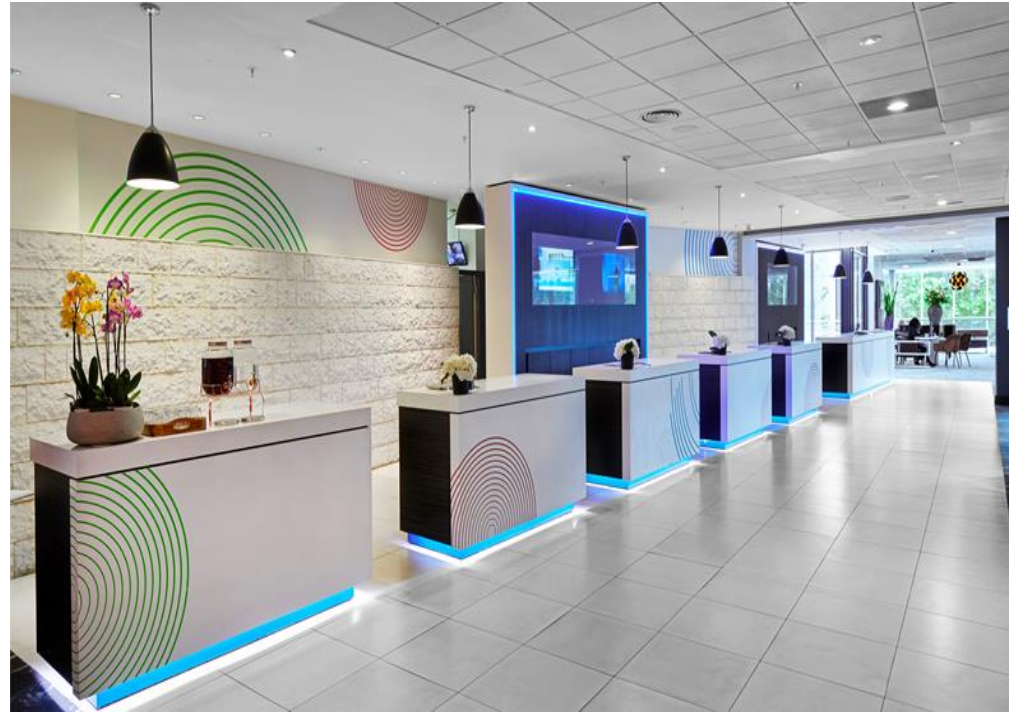
- Vibrant area for shopping & restaurants in addition to plenty of bars and coffee shops.
- River Thames: 10 minute walk with traditional London pubs, relaxed eateries & scenic routes.
- Attractions: Kensington Palace, Harrods, Westfield White City, National History Museum & Kew Gardens.
- The hotel is just a 3-minute walk from Hammersmith Underground Station and is located conveniently with direct links to Central London and Heathrow Airport.



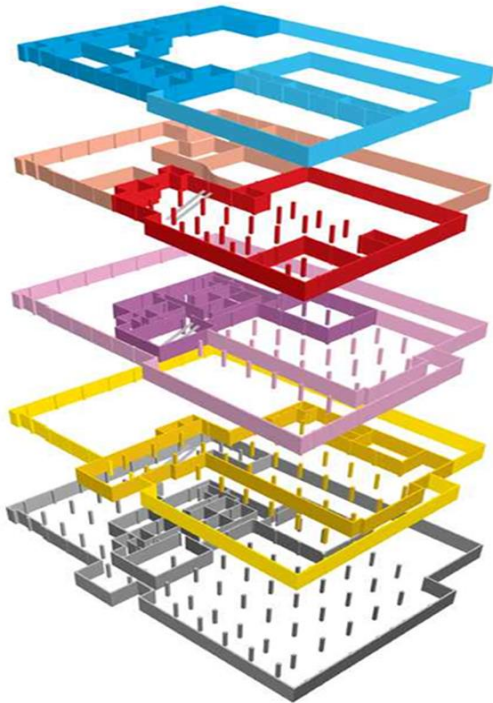


### Highlights

- 630 Spacious and comfortable guestrooms.
- 2 Restaurants and a Bar & Terrace.
- 40 flexible event spaces including an exhibition hall.
- Onsite car parking – 240 spaces & 6 coach bays.
- Complimentary Wi-Fi throughout.
- 1 – 2,000 delegates.
- Natural daylight & AV support.
- Healthcare assessed venue and on site experts
- Gym Open 24h.



### FLEXIBLE & ADAPTABLE



#### **2<sup>nd</sup> Floor**

22 Breakout Rooms.  
1 – 180 Delegates.

#### **1<sup>st</sup> Floor**

Champagne Suite  
Dedicated Entrance  
Private Bar & Terrace  
1 – 2,000 Delegates  
Cognac + Terrace, 1 – 150 Delegates  
Bourgogne, 1 – 200 Delegates

#### **Mezzanine Floor**

6 Breakout Rooms.  
1 – 100 Delegates.

#### **Ground Floor**

Chablis Suite – Exhibition Hall.  
60 3x2 Conference Set Up  
1 – 1,000 Delegates

#### **Lower Ground Floor**

Private Parking – 240 Cars.

## Conferences & Conventions

### Champagne Suite

Self Contained

Exclusive use

1,726 sqm. & 6m high ceiling

2,000 Cocktail, 1,400 Theatre & 924 Cabaret

Modular Room 3 sections + 4 large breakouts

Plenary & Private catering on one floor

Organisers Offices

Cloakroom

Restroom Facilities

Easy access – 3.5 tonne lift

Exclusive branded opportunities











## Conferences & Conventions

### Chablis Suite

1,360 sqm.

1,000 Reception, 1,000 Theatre & 600 Cabaret

Large Loading Bay Access

60 2m x 3m Stands

Branding Opportunities

Organisers Offices

Cloakroom

Restroom Facilities

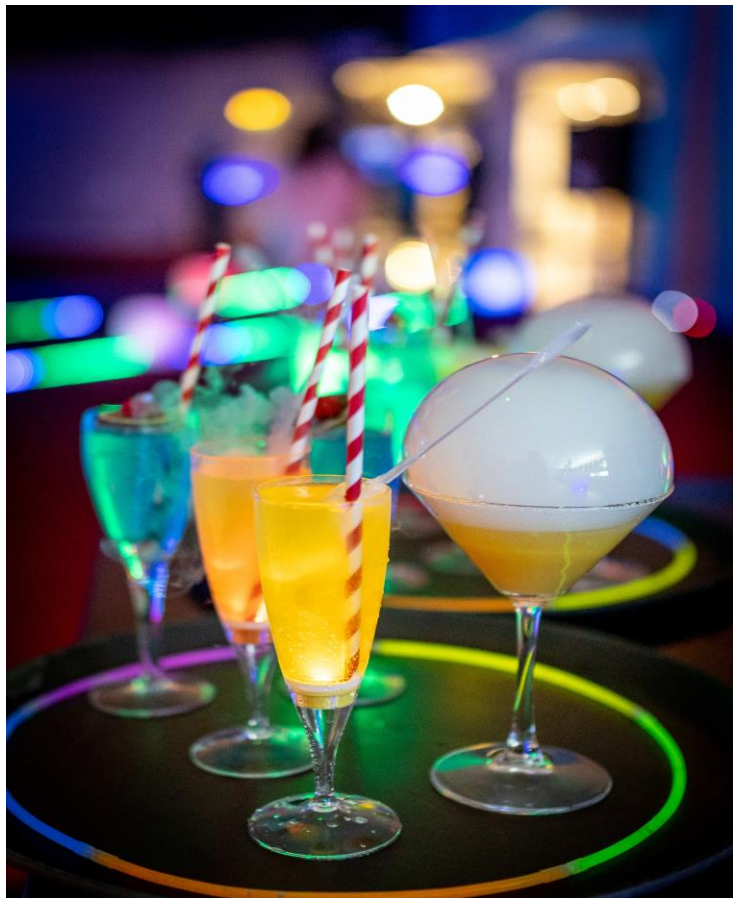
Private Bar Area

Dedicated Entrance











## Meetings

### LONDON MEETING VENUE

*Dedicated Facilities and Flexible Layouts*



### Breakout & Training Rooms

#### Mezzanine & 1<sup>st</sup> Floor:

6 x offices, green rooms, storage rooms,  
additional breakout rooms.

Dedicated support & Welcome desk and onsite  
AV company (AV included in packages).

1 – 150 Delegates.

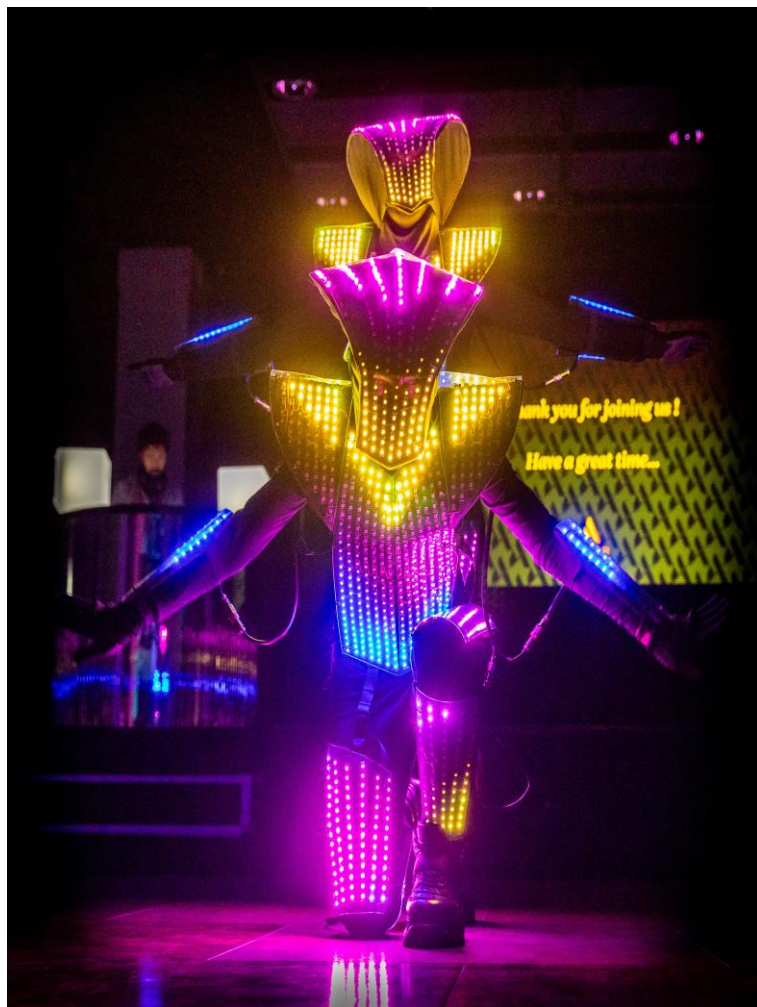
#### 2<sup>nd</sup> Floor:

17 x breakout & training rooms offering natural  
daylight & Dedicated & Private catering area.

1 – 180 Delegates.













## SPACIOUS AND RELAXING ROOMS

*Perfect for all your needs*

### Our Rooms and Suites

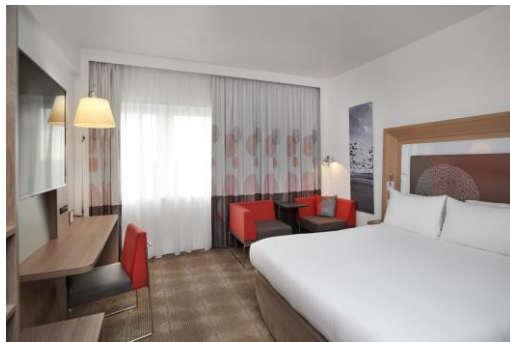
**367** Standard Double

**117** Superior Twin

**66** Executive

**75** Premium Executive

**5** Suites







## Restaurants & Bars

### MEMORABLE DININGS EXPERIENCES

*Culinary Satisfaction in Modern Surroundings*

#### AROMA RESTAURANT

Aroma offers a wide array of international cuisine including top quality meats, freshly caught seafood, oven-baked breads and sweet fruit and vegetables, all served buffet-style for your convenience.



#### ARTISAN

This A la Carte restaurant serves the finest meat, fish and vegetarian dishes, simply cooked and served in modern and relaxed surroundings



#### MIRRORS BAR & TERRACE

Offering a wide range of beverages, cocktails and delicious menu options, this is a great space to relaxed.







## CSR - Corporate Social Responsibility

- Wooden key Cards.
- Herb Garden onsite
- Sustainable menu options
- Locally source products.
- “Too good to go” affiliation
- Waste reduction management
- Sensor activated lights/escalators in all event space & bedroom corridors
- No single use plastic items
- Local community engagement





## Social Impact



Local community engagement